

To Fax Order: 330-674-1877 To Call Order: 330-674-5252 To Mail Order: Fryburg Door, 6086 SR 241, Millersburg, OH 44654

**Customer:** \_\_\_\_\_ **Specie:** \_\_\_\_\_ **Date:** \_\_\_\_\_  
**Component:** \_\_\_\_\_ **# of Components:** \_\_\_\_\_ **Standard**  **Rush**

**Use to order: Doors, End Panels, Cabinet Grade Drawer Fronts** **GRADE**

Qty	Thickness	Width	Length	Remarks

Cabinet \_\_\_\_\_  
 Furniture \_\_\_\_\_  
 FD \_\_\_\_\_  
 Style \_\_\_\_\_  
 Stain \_\_\_\_\_  
 Lip \_\_\_\_\_  
 Profile # \_\_\_\_\_

**Use to order: Edge Glued Panels, S4S, Moldings, Furniture Grade Drawer Fronts**

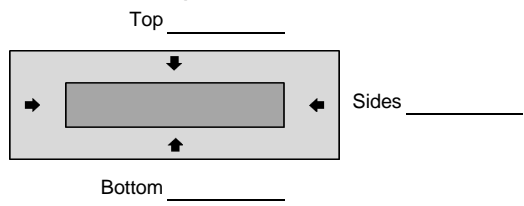
Qty	Thickness	Width	Length	CTS	S1S	S2S	FDT	FDG	Profile #	Details

**Use to order: Dovetailed Drawer Boxes**  Assembled  Unassembled  UM Prep

Qty	Height	Width	Depth	Detail

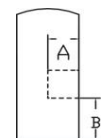
Specie: \_\_\_\_\_  
 Thickness \_\_\_\_\_ 5/8" \_\_\_\_\_ 1/2" \_\_\_\_\_ 3/4"  
 Top Edge Profile \_\_\_\_\_ 1/8" Round  \_\_\_\_\_ 1/2 Round  \_\_\_\_\_ Square

**Drawer Front Specifications:**



**Optional Groove**  
 Standard Dim. for groove, 1/4"x 1/4" - .462" from the bottom.

Specify dim. if not standard.  
 A: \_\_\_\_\_  
 B: \_\_\_\_\_



If you are ordering a furniture grade box and would like to have your drawer front relished and dovetailed please specify relished dimensions above.